

# Сөмбелә

Мәсгүдә Шәмсетдинова көе  
Гөлшат Зәйнашева сүзләре

Moderato

Piano

The piano introduction consists of four measures. The right hand is mostly silent, with a few notes in the final measure. The left hand plays a rhythmic accompaniment of eighth notes, starting with a half note D4, followed by eighth notes E4, F#4, G4, A4, B4, C5, and D5. The dynamics are marked *mf*.

5 tempo I

Сөм - бе - лә дип ма - тур и - сем куш - ты и - кән кем ге - нә?

Pno.

The vocal line begins at measure 5 with a half note D4, followed by quarter notes E4, F#4, G4, A4, B4, C5, and D5. The piano accompaniment features a rhythmic pattern of eighth notes in the right hand and half notes in the left hand.

9

Сөм - бел гөл - дән ө - зе - леп төш - кән чә - чәк - тер ул — кем - бе - лә.

Pno.

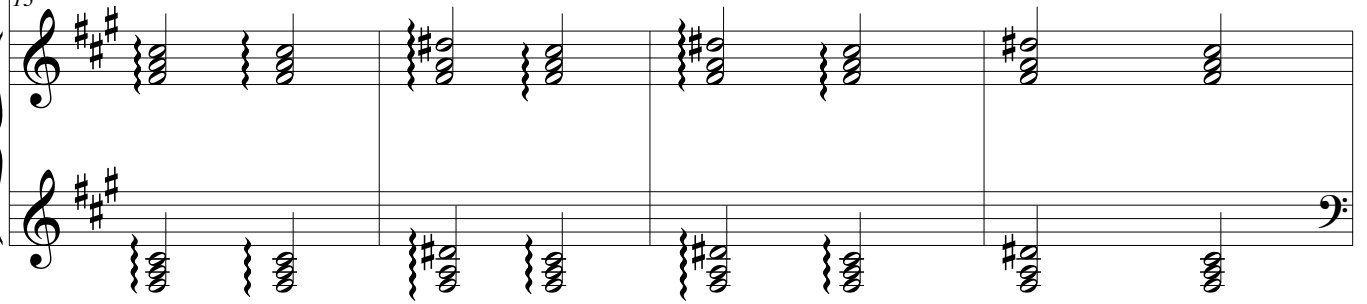
The vocal line continues at measure 9 with a half note D4, followed by quarter notes E4, F#4, G4, A4, B4, C5, and D5. The piano accompaniment continues with the same rhythmic pattern.

2  
13



Сөм - бе - лә, Сөм-бе - лә, сөм - бел гөл - дән ө - зе - леп төш - кән

13



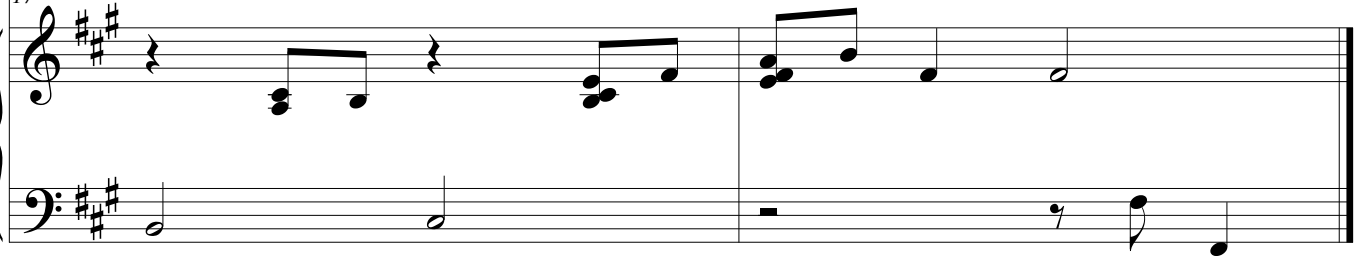
Pno.

17



чә - чәк - тер ул кем белә.

17



Pno.